

East Midlands – Green Growth & Retrofit Strategy

Adrian Prestidge

Green Growth Project Manager



Sustainable Energy Provisioning & Demand Management



- Retrofit
- Community Energy
- Renewable Energy
- Local Area Energy Planning
- Strategic Energy Partnerships / Investment



Figure 11 Example screen shot Energy Baseline simulated heating energy per building



Green Growth Pillars

Infrastructure

- Large-scale Generation
- Hydrogen
- Carbon Capture & Storage
- AI / Co-location
- Heat Networks

Strategic

- Local Area Energy Planning
- Strategic Energy Partnerships
- Investment
- Green Finance
- Skills

Project Delivery

- Retrofit
- Community Energy
- Mayoral Renewable Fund

The Green Energy landscape across the EMCCA

- The EMCCA region has retired 7.2GW of energy infrastructure since 2010,
20% of all energy retirement in the UK
- Ratcliffe-on-Soar in Rushcliffe, was the UK's last coal-fired power station, closing on 30th September 2024
- This legacy leave behind a wealth of power infrastructure
- West Burton is set to host one of the world's first prototype fusion power plants
- The region attracts more private investment in nuclear than any other sustainable energy technology
- We are home to Peak Cluster, a nationally significant CCUS project decarbonising 40% of the UK's cement industry
- East Midlands Hydrogen is the largest inland hydrogen cluster in the UK comprising of hydrogen generators, technology manufacturers, innovators and end-users



Outcomes Framework and Corporate Plan 2026-29

The East Midlands Outcomes Framework sets **outcomes**, with corresponding **indicators** for each of the **six long-term ambitions**. The Outcomes Framework sets out how we **define success** across each ambition, and how we will **measure it**. The snapshot below illustrates the outcomes that sit underneath each Ambition.



Ambition 1: Growth and opportunity

Inclusive economic growth across the region, with more good jobs

More businesses across the region to grow, innovate and scale

More investment, to accelerate exports and increase productivity



Ambition 2: Green Growth and a Better Environment

Green growth, with more clean energy generation and increased energy efficiency

A better, healthier and more resilient environment



Ambition 3: Skills for Good Work

People gain the skills and qualifications they need to thrive

Address barriers to employment, and reduce economic inactivity and unemployment

Residents access secure, fair paid work with opportunities to progress



Ambition 4: Connected Communities

Strengthened and extended public transport that is reliable, easy to use and affordable for people and communities

Greener, healthier and more resilient transport networks

Everyone can access fast and reliable digital infrastructure



Ambition 5: Homes and Place

Everyone has access to a decent, secure and affordable home

Prevent and reduce homelessness and rough sleeping

Vibrant places that connect people and communities to work and opportunity



Ambition 6: Health, Wellbeing and Belonging

People live healthier lives, with reduced health inequalities between people and communities

Safe and inclusive places to live and work, that support everyone's wellbeing

Tackle poverty and inequality between people and communities, including by reforming public services.

Local Growth Plan - Clean Energy and Climate Resilient Infrastructure

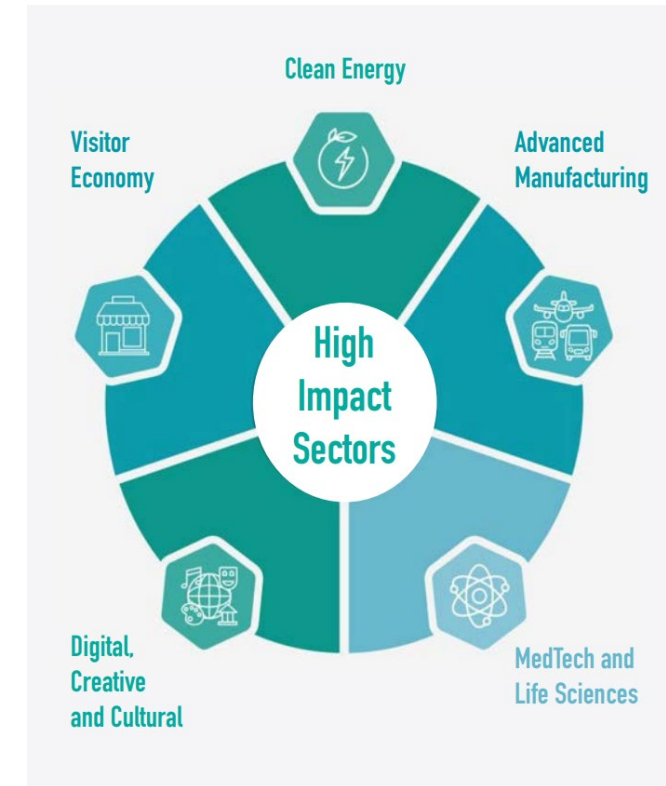
The first steps we will take over the next 2 years to build capacity to deliver, develop and enable change:

Clean Energy

- Deploy £15.7 million of East Midlands Investment Zone capital to attract private capital and drive industrial transformation, including in nuclear and fusion.
- Empower public sector and community led energy schemes through targeted funding, partnerships and support to increase these schemes by 5MW.
- Drive targeted, high-impact energy investment leveraging the outputs of England's largest Local Area Energy Plan with Digital Twinning.
- Identify suitable sites for investment in utility scale clean energy generation.
- Mobilise finance, skills and delivery models to scale retrofit partnerships.
- Align local projects with national funding and grid upgrade opportunities through the Government's Clean Power 2030 Action Plan.

Housing and Place

- Work with local authorities and the Net Zero Hub to enable retrofit delivery of 2,500 homes and 5,000 energy efficiency and generating measures



Local Growth Plan - Clean Energy and Climate Resilient Infrastructure

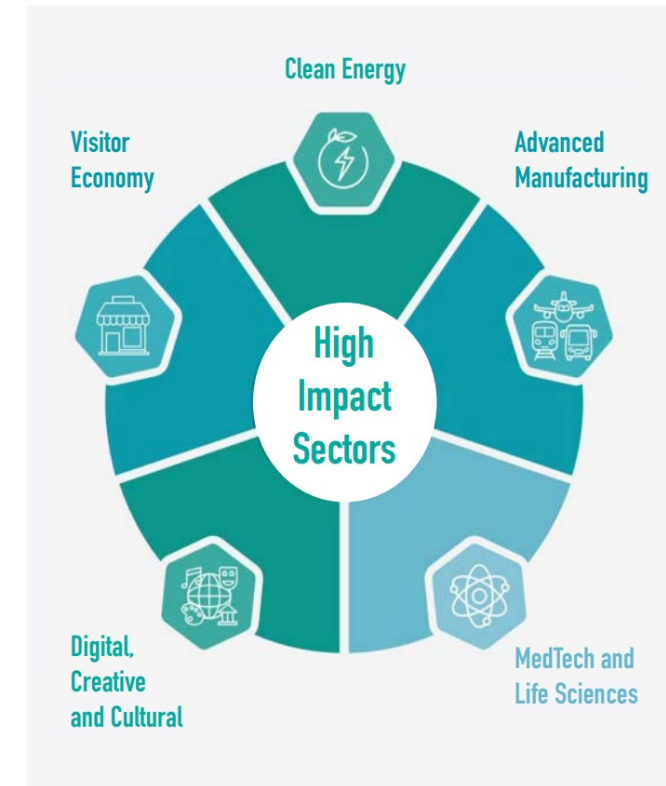
The 10-year transformational system wide changes that residents will see and feel:

Clean Energy

- Unlock major investment across fusion, nuclear fission, hydrogen, wind, solar, heat networks and Carbon Capture, Utilisation and Storage (CCUS) capitalising on our strengths and supply chain potential.
- Make the East Midlands the UK's next clean energy hub, driving innovation, trade and high-value export opportunities.
- Advance the transformation of decommissioned power stations for clean energy generation and storage uses and co-location of symbiotic sectors that enable a circular economy approach to manufacturing, food production and other relevant industries.
- Expand opportunity for people to upskill or reskill into clean energy sectors in collaboration with businesses and skills providers.
- Make significant progress in support of government's Net Zero 2050 ambition by enabling the reduction industrial and commercial emissions.
- Meet and exceed the national decarbonisation target by enabling a more resilient, lower-cost energy system that supports green growth

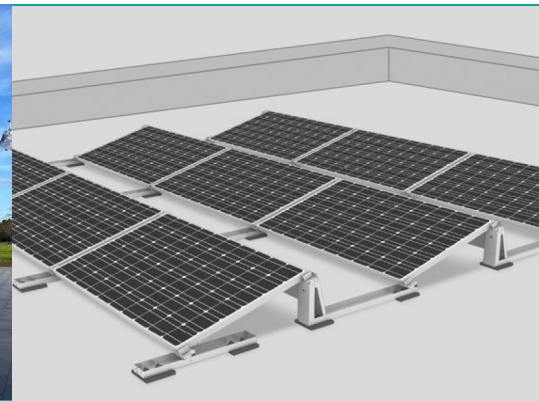
Housing and Place

- Address fuel poverty and high energy bills by scaling up local retrofit and energy efficiency schemes, to deliver 12,000 homes retrofitted with energy efficiency measures



Projects: Mayoral Renewable Fund

- In partnership with Derbyshire County Council a 3.4MW solar farm on reclaimed land formerly part of Williamthorpe Colliery, near Chesterfield.
 - Includes additional planting, wildflower seeding and tree planting to also improve the habitat for wildlife and insects.
 - ~1.9 million kWh of clean, renewable electricity each year
-
- In partnership with Rushcliffe Borough Council developing a circa 460kWp solar array on Rushcliffe Arena.
 - Over the project's lifetime, the solar installation is set to cut the council's energy bills by nearly £2 million.
 - The solar array is projected to save more than 1,600 tonnes of carbon emissions over the next 25 years – the equivalent of removing 141 family homes from the grid.



What has EMCCA done on Retrofit

- **Delivered £10.1m of Retrofit capital installations**

providing 837 measures installed over 500 homes. The place-based approach taken within the project allowed each LA area to adapt their delivery to their assets, contractors and constituents.

- **Commissioned Local Area Energy Plans (LEAP)**

These will identify the scale of retrofit needed, The areas with lowest efficient homes, And grid capacity limitations that could impact specific measures.

- **Joined the Warm Homes Plan Workforce Taskforce**

Mayor Claire has joined the workforce taskforce which is focused on creation of a skilled workforce to deliver the Warm Homes Plan.

- **Supported the Local Area Retrofit Accelerator Pilot**

EMCCA has supported the delivery of this pilot project and the Retrofit Strategy it developed.

At the request of the region, it has now taken ownership of the strategy and will lead on its delivery.

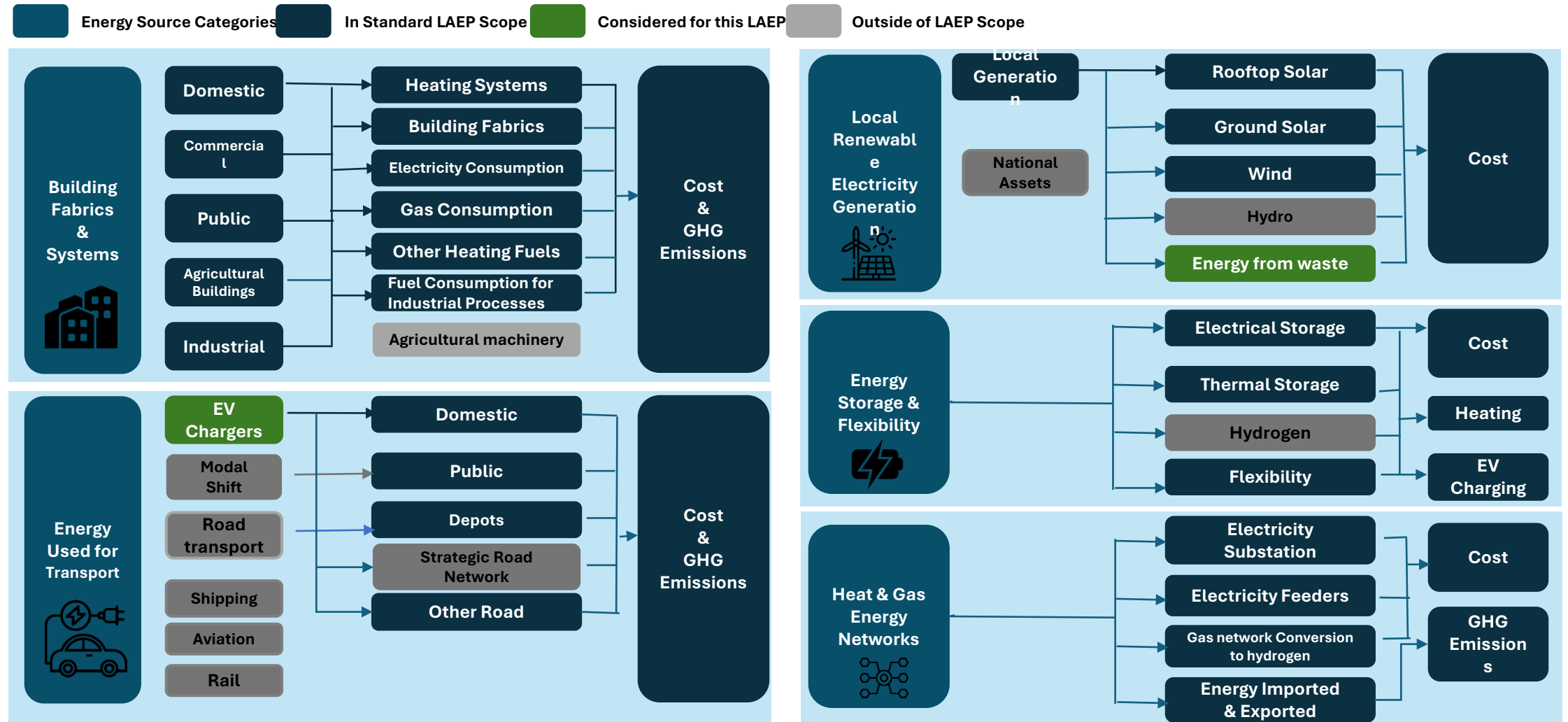


Projects: Local Area Energy Plans



Figure 11 Example screen shot Energy Baseline simulated heating energy per building.

Projects: Local Area Energy Plans



The Local Area Retrofit Accelerator – Funded by the MCS Foundation



- Region-wide bid submitted by Nottinghamshire County Council and Bolsover District Council on behalf of all 19 LAs and 22 other stakeholders
- 3 in-person workshops alongside working groups and stakeholder interviews
- A Collaborative co-design process to build a place based retrofit strategy
- 58 partners and over 100 individuals took part
- Workshop reports and locality assessment are on our website

Vision

“A just future in which we’re all living in healthy, energy-efficient homes within sustainable communities.”

Outcomes

Overall Retrofit Progress | Collective commitment | Health and wellbeing | Equitable access | Environmental Sustainability | Viable local retrofit sector | Capability

Goal 1: Increase awareness and confidence in all aspects of retrofit for all households and the retrofit sector.

Sub-goal 1.1: Develop a coordinated and trusted communication, information, and advice service

Sub-goal 1.2: Support and invest in community and peer to peer approaches

Sub-goal 1.3: Enable quality assurance for all retrofit work

Goal 2: Deliver a cross-sector, long-term regional (EMCC) collaborative partnership maintaining momentum for retrofit

Sub-goal 2.1: Get active participation in structures and processes for collaboration

Sub-goal 2.2: Share retrofit knowledge and data

Sub-goal 2.3: Coordinate resources and align bids and funding options

Goal 3: Accelerate development of scalable solutions and sustainable, long-term financial resources for retrofit delivery for all

Sub-goal 3.1: Develop tailored support pathways for all housing tenures to improve access to funding

Sub-goal 3.2: Support creation of consistent, long term funding streams for retrofit - an offering for all sectors of the market

Goal 4: Ensure we have local/regional capacity and capabilities for high quality retrofit delivery at scale

Sub-goal 4.1: Grow and diversify the retrofit workforce

Sub-goal 4.2: Work towards a robust local/regional supply chain and a viable retrofit market

Goal 5: Ensure that retrofit enhances quality of life, and delivers healthier, future proofed homes and reduced fuel poverty

Sub-goal 5.1: Promote and evaluate the health impacts of retrofit

Sub-goal 5.2: Prioritise the alleviation of fuel poverty

Mission

“We will improve our homes faster, prioritising confidence, quality, affordability and collaboration, and grow skills and jobs in our region.”

Principles

Trustworthy | People-centred | Accessible | Purposeful | Sustainable | Collaborative

CLAIRE WARD
MAYOR OF THE
EAST MIDLANDS



East Midlands Combined Counties Retrofit Strategy 2025-2028



The East Midlands Retrofit Strategy - Next Steps

-Embedding the Strategy

- Steering group
- Project management office
- Forward plan
- Monitoring plan

- Marketing and promotion

- Cross-sector action groups / forums

- Retrofit Promotion events

- Retrofit Facilitation tools/services

- SME Support

- Stakeholder assessment

- Community Engagement



The Warm Homes Plan

- £5 billion for low-income household schemes
- £2 billion for consumer loans
- £2.7 billion for the Boiler Upgrade Scheme
- £1.1 billion for Heat Networks
- £2.7 billion for innovative finance through the Warm Homes Fund to invest in home upgrades
- £1.5 billion other funding for Warm Homes Plan programmes and Devolved Administrations

Reframes retrofit as a long-term national infrastructure-style programme rather than a series of short-term grants.

- A financial offering for every household, regardless of income.
- Development of a new, national delivery agency.
- A renewed push on heat networks and zoning.
- Stronger regulations in the private rented sector.

Overall direction: mass rollout of low-carbon heating (primarily heat pumps) and solar PV, supported by targeted insulation and wider home upgrades, delivered through simpler, more place-based systems.



Thank you

adrian.prestidge@eastmidlands-cca.gov.uk

www.eastmidlands-cca.gov.uk/what-we-do/net-zero/domestic-retrofit